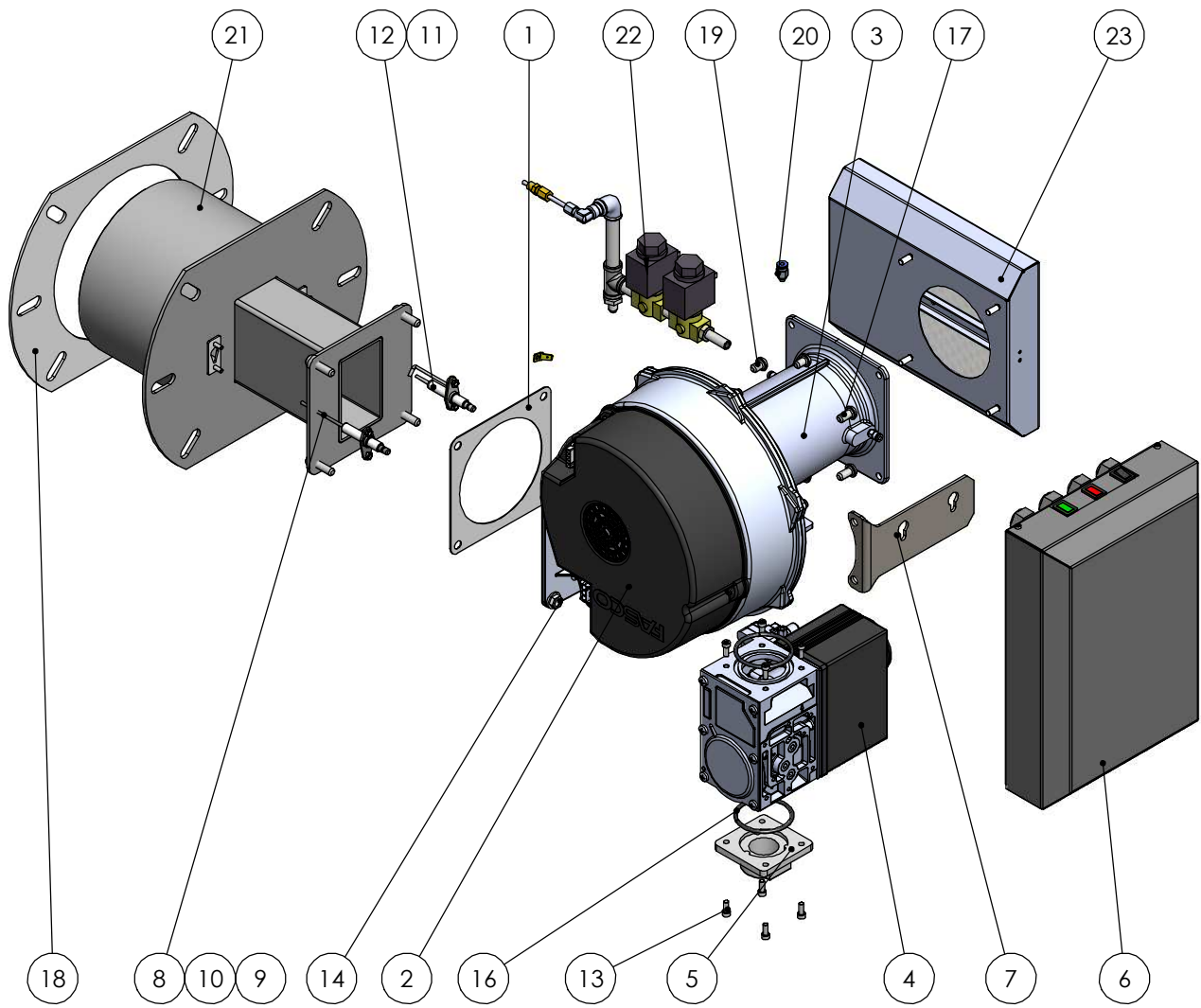


A3
91419



ITEM NO.	PART NUMBER	DESCRIPTION	Default/ QTY.
1	88042	FAN GASKET 170	1
2	20042	FAN - FASCO GPM 7.0H	1
3	60011	Venturi Mixing Unit VMU300A1004	1
4	03055	Gas Valve VR425VA5034-0000	1
5	68010	Honeywell 1" Flange - Kit Comb 25	1
6	92239	Burner Management Unit MK6	1
7	78054	Bracket 300 - Burner Management Unit	1
8	42011	IONISATION PROBE - 30	1
9	62004	M4 HEX NUT	4
10	63404	WASHER - M4 - SPRING	4
11	09016	EARTH TAB	1
12	41078	Ignition Electrode-Double Wire-30	1
13	61020	SCREW - M5 x 12 - SOCKET CAP	8
14	62108	NUT - M8 - FLANGE	4
15	88073	GASKET - ELECTRODE	1
16	89004	"O"- RING - VR GAS VALVE 53mm ID x 59mm OD	2
17	61133	M8 x 16 Hex Socket Button Screw - S/S	2
18	88130	Burner Mounting Gasket - Inverterjet PW 300M	1
19	61134	M8 x 12 Hex Socket Button Screw - S/S	7
20	65014	4mm Push Hose Fitting Nipple	1
21	51842	Burner Head - Inverterjet Ultra 300	1
22	92222	Pilot Gas Train - Inverterjet Ultra 175	1
23	92243	Filter	1

A	FIRST ISSUE	T.S.	26/01/22
ISSUE	MODIFICATION	APPR	DATE
1			
2			

FINISH:		MATERIAL:	
CHK'D			
APPR			
	NAME	SIGNATURE	DATE

Burnertech Combustion Engineers Ltd		TITLE: INVERTERJET ULTRA 300	
Unit C Lostock Industrial Estate, Lostock Lane, BL6 4BL		CUSTOMER REF:	
Tel: +44 (0) 1204 393222 Fax: +44 (0) 1204 394222		DIMENSIONS ARE IN MILLIMETERS DEBURR AND BREAK SHARP EDGES	
E-mail: info@burnertech.co.uk		UNLESS OTHERWISE SPECIFIED: TOLERANCES: LINEAR: ±0.5 ANGULAR: ± 0.5	
DRAWN BY: S.I.		DATE: 14.12.21	
DO NOT SCALE DRAWING		SCALE: 1:5	THIRD ANGLE PROJECTION
		IF IN DOUBT ASK	SHEET 4 OF 4
			A3



A

B

C

D

A3

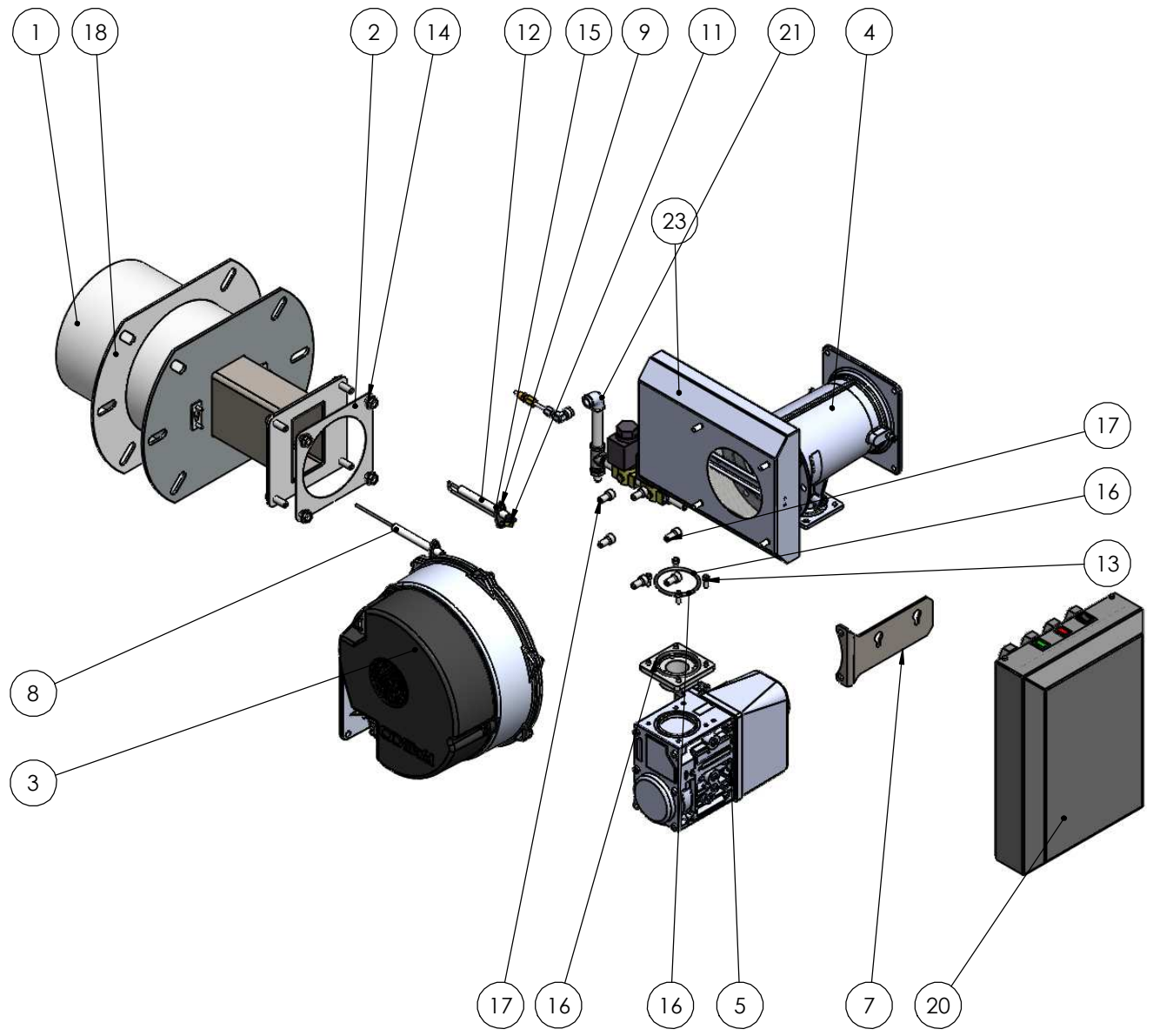
1 A3
91422

A

B

C

D



ITEM NO.	PART NUMBER	DESCRIPTION	Default/QTY.
1	51844	Burner Head - Inverterjet Ultra 400	1
2	88042	FAN GASKET 170	1
3	20042	FAN - FASCO GPM 7.0H	1
4	60040	Venturi Mixing Unit VMU400A1002	1
5	03026	Gas Valve VR434VA50091000	1
6	68010	Honeywell 1" Flange - Kit Comb 25	1
7	78054	Bracket 300 - Burner Management Unit	1
8	42012	Ionisation Probe-73	1
9	62004	M4 HEX NUT	4
10	63404	WASHER - M4 - SPRING	4
11	09016	EARTH TAB	1
12	41086	Ignition Electrode-73	1
13	61020	SCREW - M5 x 12 - SOCKET CAP	8
14	62108	NUT - M8 - FLANGE	4
15	88073	GASKET - ELECTRODE	2
16	89004	"O"- RING - VR GAS VALVE 53mm ID x 59mm OD	2
17	61041	SCREW - M8 X 16 - SOCKET CAP	6
18	88130	Burner Mounting Gasket - Inverterjet PW 300M	1
20	92239	Burner Management Unit MK6	1
21	92226	Pilot Gas Train - Inverterjet Ultra 175	1
22	93091	Kit - Filter - Inverterjet PW 300	1
23	92243	Filter	1

ISSUE	MODIFICATION	APPR	DATE
1	FIRST ISSUE	T.S.	26/01/22


CHK'D	APPR	NAME	SIGNATURE	DATE

Burnertech Combustion Engineers Ltd

Unit C Lostock Industrial Estate, Lostock Lane, BL6 4BL

Tel: +44 (0) 1204 393222
Fax: +44 (0) 1204 394222

E-mail: info@burnertech.co.uk



TITLE: INVERTERJET ULTRA 400			
CUSTOMER REF:			
DIMENSIONS ARE IN MILLIMETERS DEBURR AND BREAK SHARP EDGES		UNLESS OTHERWISE SPECIFIED: TOLERANCES: LINEAR: ±0.5 ANGULAR: ±0.5	
DRAWN BY: M.A.		DATE: 14.12.21	
SCALE: 1:5	THIRD ANGLE PROJECTION	IF IN DOUBT ASK	SHEET 1 OF 3

A

B

C

D

DO NOT SCALE DRAWING

A3

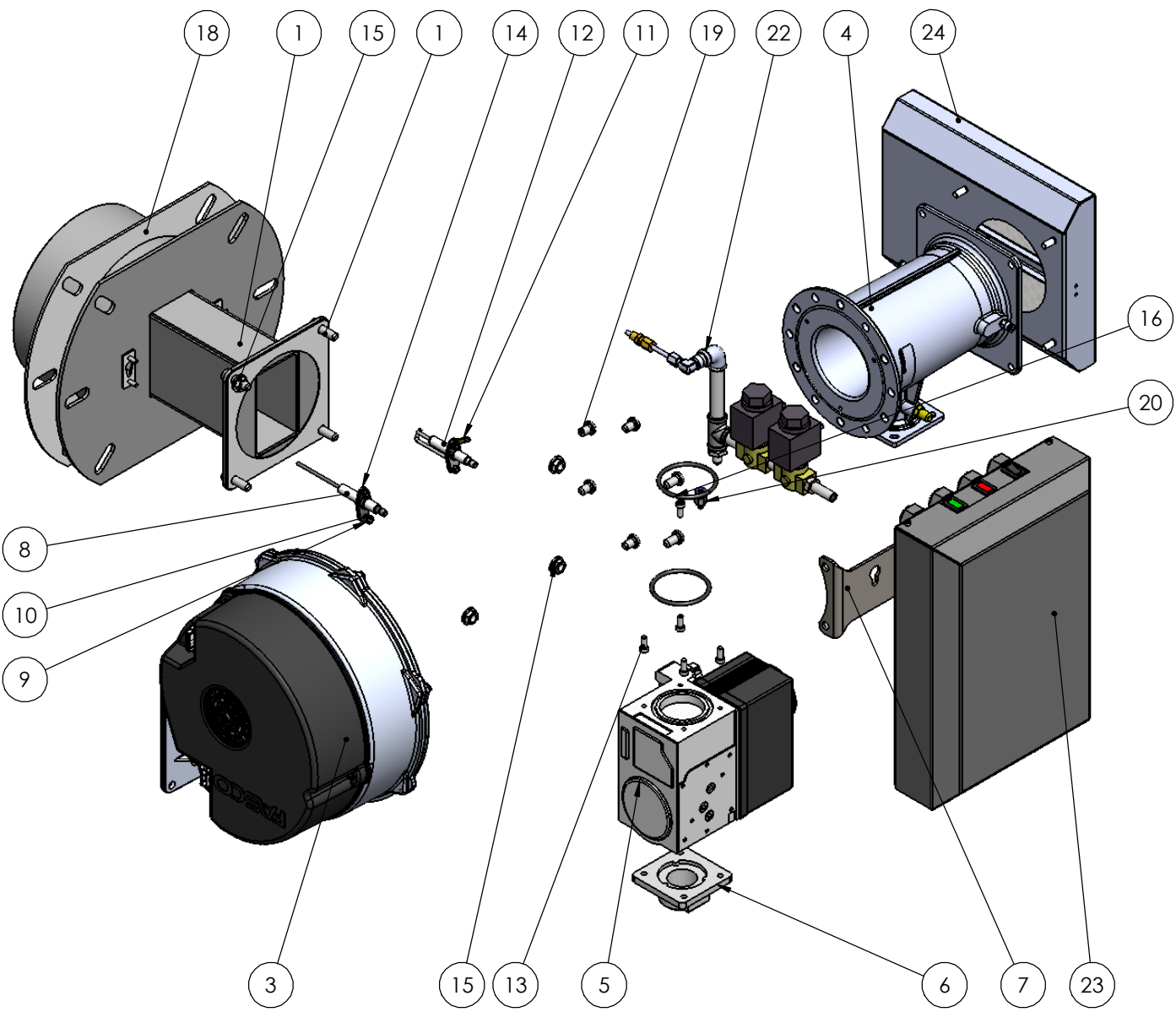
A3
91416

A

B

C

D



5		6	
80	61705	SCREW - M4 x 12 PAN POZI	1
1	51836	Burner Head - Inverterjet Ultra 175	1
2	88042	FAN GASKET 170	1
3	20042	FAN - FASCO GPM 7.0H	1
4	60035	Venturi Mixing Unit - VMU185A1009	1
5	03056	Gas Valve VR420VA5013-0000	1
6	68010	Honeywell T ¹ Flange - Kit Comb 25	1
7	78054	Bracket 300 - Burner Management Unit	1
8	42011	IONISATION PROBE - 30	1
9	62004	M4 HEX NUT	4
10	63404	WASHER - M4 - SPRING	4
11	09016	EARTH TAB	1
12	41078	Ignition Electrode-Double Wire-30	1
13	61020	SCREW - M5 x 12 - SOCKET CAP	8
14	88073	GASKET - ELECTRODE	2
15	62108	NUT - M8 - FLANGE	4
16	89004	"O"- RING - VR GAS VALVE 53mm ID x 59mm OD	2
17	61133	M8 x 16 Hex Socket Button Screw - S/S	2
18	88130	Burner Mounting Gasket - Inverterjet PW 300M	1
19	61134	M8 x 12 Hex Socket Button Screw - S/S	4
20	65014	4mm Push Hose Fitting Nipple	1
21	93091	Kit - Filter - Inverterjet PW 300	1
22	92222	Pilot Gas Train - Inverterjet Ultra 175	1
23	92239	Burner Management Unit MK6	1
24	92243	Filter	1

ISSUE	MODIFICATION	APPR	DATE
3	BMU CHANGED. PILOT IMPROVED	T.S.	25/01/22


CHK'D	APPR	NAME	SIGNATURE	DATE

Burnertech Combustion Engineers Ltd

Unit C Lostock Industrial Estate, Lostock Lane, BL6 4BL

Tel: +44 (0) 1204 393222
Fax: +44 (0) 1204 394222

E-mail: info@burnertech.co.uk



DO NOT SCALE DRAWING

TITLE: INVERTERJET ULTRA 175

CUSTOMER REF:

DIMENSIONS ARE IN MILLIMETERS
DEBURR AND BREAK SHARP EDGES

UNLESS OTHERWISE SPECIFIED:
TOLERANCES:
LINEAR: ±0.5
ANGULAR: ± 0.5

DWG NO. 91416 3

DRAWN BY: M.A. **DATE: 14.12.21**

SCALE: 1:5 **THIRD ANGLE PROJECTION** **IF IN DOUBT ASK** **SHEET 1 OF 2** **A3**

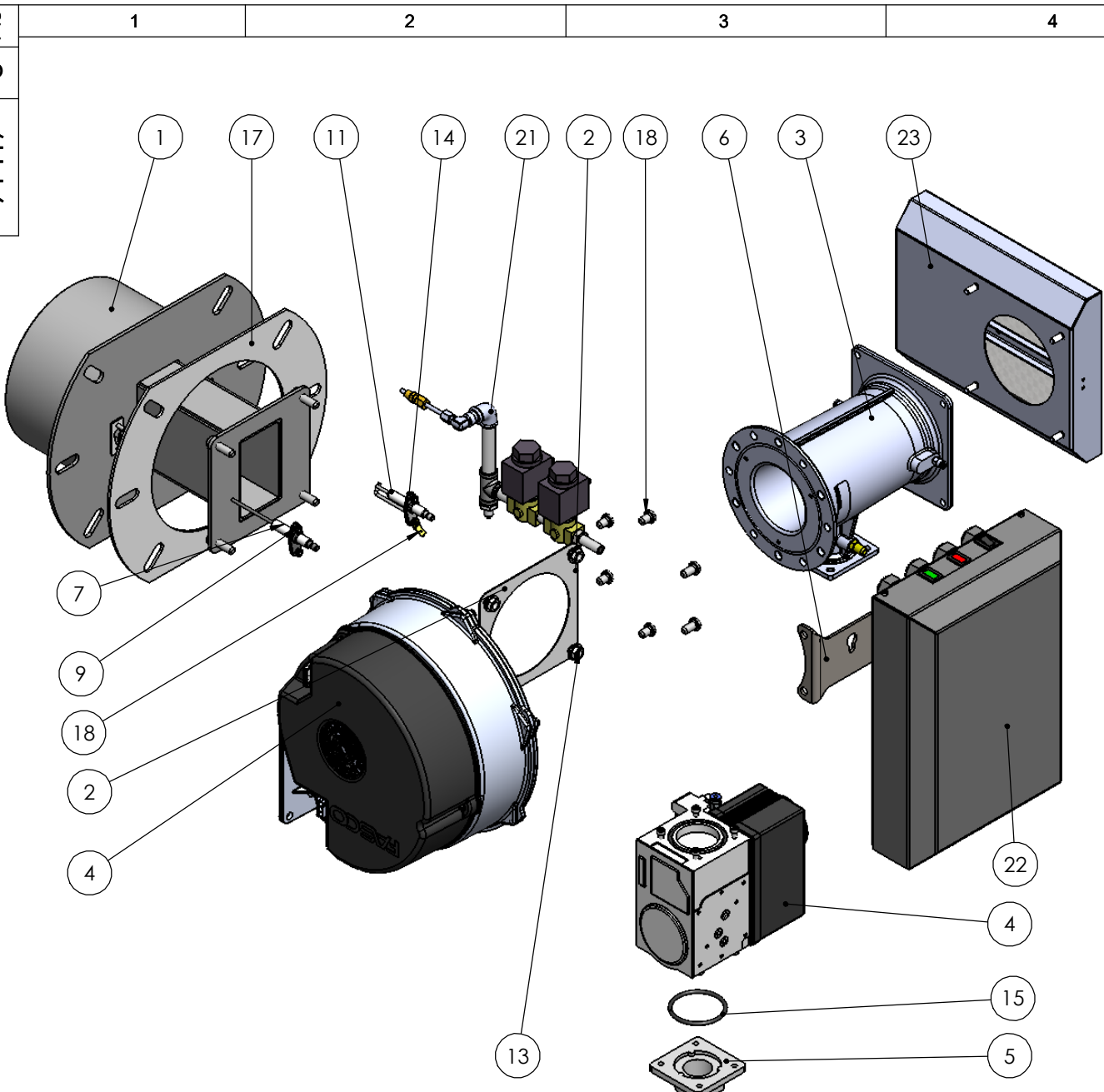
A3
3
91417

A

B

C

D



1	2	3	4	5	6
103	61438			M6 x 16 Clinch stud TR00028812-100	
1	51836			Burner Head - Inverterjet Ultra 175	
2	88042			FAN GASKET 170	
3	60011			Venturi Mixing Unit VMU300A1004	A
4	03056			Gas Valve VR420VA5013-0000	
5	68010			Honeywell 1" Flange - Kit Comb 25	
6	78054			Bracket 300 - Burner Management Unit	
7	42011			IONISATION PROBE - 30	
4	51676			Burner Tube - Inverterjet PW 150M	
9	62004			M4 HEX NUT	
10	63404			WASHER - M4 - SPRING	
11	41080			Ignition Electrode-Double Wire-30-Bent	B
12	61020			SCREW - M5 x 12 - SOCKET CAP	
13	62108			NUT - M8 - FLANGE	B
14	88073			GASKET - ELECTRODE	
15	89004			"O"- RING - VR GAS VALVE 53mm ID x 59mm OD	
16	61133			M8 x 16 Hex Socket Button Screw -S/S	
17	88130			Burner Mounting Gasket - Inverterjet PW 300M	
18	61134			M8 x 12 Hex Socket Button Screw -S/S	
19	65014			4mm Push Hose Fitting Nipple	
20	93091			Kit - Filter - Inverterjet PW 300	
21	92222			Pilot Gas Train - Inverterjet Ultra 175	
22	92239			Burner Management Unit MK6	C
23	92243			Filter	

A

B

C

D

ISSUE	MODIFICATION	APPR	DATE
3	Burner management unit changed	M.A.	09.11.22
B	Burner Head Modified	M.A.	06.01.20
A	FIRST ISSUE	M.A.	17.07.19


CHK'D	APPR	NAME	SIGNATURE	DATE

Burnertech Combustion Engineers Ltd

Unit C Lostock Industrial Estate, Lostock Lane, BL6 4BL

Tel: +44 (0) 1204 393222
Fax: +44 (0) 1204 394222

E-mail: info@burnertech.co.uk



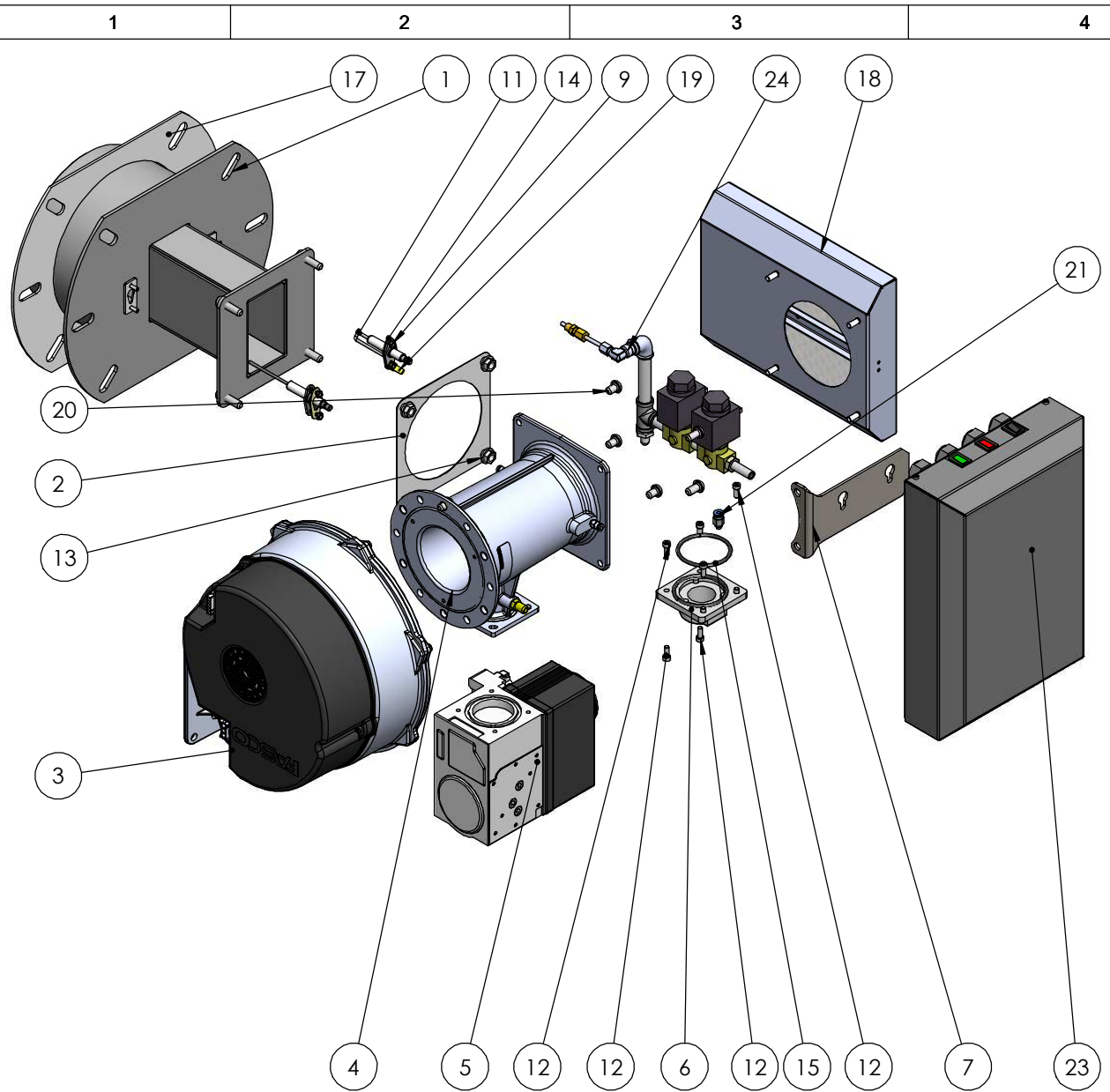
TITLE: INVERTERJET ULTRA 200	
CUSTOMER REF:	
DIMENSIONS ARE IN MILLIMETERS DEBURR AND BREAK SHARP EDGES	UNLESS OTHERWISE SPECIFIED: TOLERANCES: LINEAR: ±0.5 ANGULAR: ± 0.5
DRAWN BY: M.A.	DATE: 17/09/2019
SCALE: 1:5	THIRD ANGLE PROJECTION
IF IN DOUBT ASK	SHEET 1 OF 2

DWG NO. **91417** **3**

DO NOT SCALE DRAWING

A3

A3
91418



ITEM NO.	PART NUMBER	DESCRIPTION
1	51836	Burner Head - Inverterjet Ultra 175
2	88042	FAN GASKET 170
3	20042	FAN - FASCO GPM 7.0H
4	60011	Venturi Mixing Unit VMU300A1004
5	03056	Gas Valve VR420VA5013-0000
6	68010	Honeywell 1" Flange - Kit Comb 25
7	78054	Bracket 300 - Burner Management Unit
8	42011	IONISATION PROBE - 30
9	62004	M4 HEX NUT
10	63404	WASHER - M4 - SPRING
11	41078	Ignition Electrode-Double Wire-30
12	61020	SCREW - M5 x 12 - SOCKET CAP
13	62108	NUT - M8 - FLANGE
14	88073	GASKET - ELECTRODE
15	89004	"O"- RING - VR GAS VALVE 53mm ID x 59mm OD
16	61133	M8 x 16 Hex Socket Button Screw -S/S
17	88130	Burner Mounting Gasket - Inverterjet PW 300M
18	92243	Filter
20	61134	M8 x 12 Hex Socket Button Screw -S/S
21	65014	4mm Push Hose Fitting Nipple
22	66023	4mm OD Pneumatic Air Hose - Black
23	92239	Burner Management Unit MK6
24	92222	Pilot Gas Train - Inverterjet Ultra 175
25	93091	Kit - Filter - Inverterjet PW 300

A	FIRST ISSUE	M.A.	17.07.19	
ISSUE	MODIFICATION	APPR	DATE	
1		2		

FINISH:		MATERIAL:	
CHK'D			
APPR			
	NAME	SIGNATURE	DATE

Burnertech Combustion Engineers Ltd		TITLE: INVERTERJET ULTRA 250	
Unit C Lostock Industrial Estate, Lostock Lane, BL6 4BL		CUSTOMER REF:	
Tel: +44 (0) 1204 393222 Fax: +44 (0) 1204 394222		DIMENSIONS ARE IN MILLIMETERS DEBURR AND BREAK SHARP EDGES	
E-mail: info@burnertech.co.uk		UNLESS OTHERWISE SPECIFIED: TOLERANCES: LINEAR: ±0.5 ANGULAR: ± 0.5	
DRAWN BY: M.A.		DATE: 14.12.21	
DO NOT SCALE DRAWING		SCALE: 1:6.5	THIRD ANGLE PROJECTION
		IF IN DOUBT ASK	SHEET 1 OF 6
			A3



A

B

C

D